

Author Guidelines
WMS Journal of Management
School of Management
Walailak University

1. Focus and Scope

WMS Journal of Management, Walailak University to serve as a Platform for disseminating knowledge and research in the fields of management, business, accountancy, tourism, economics and other related fields. The types of contributions include research article, academic manuscript and book review.

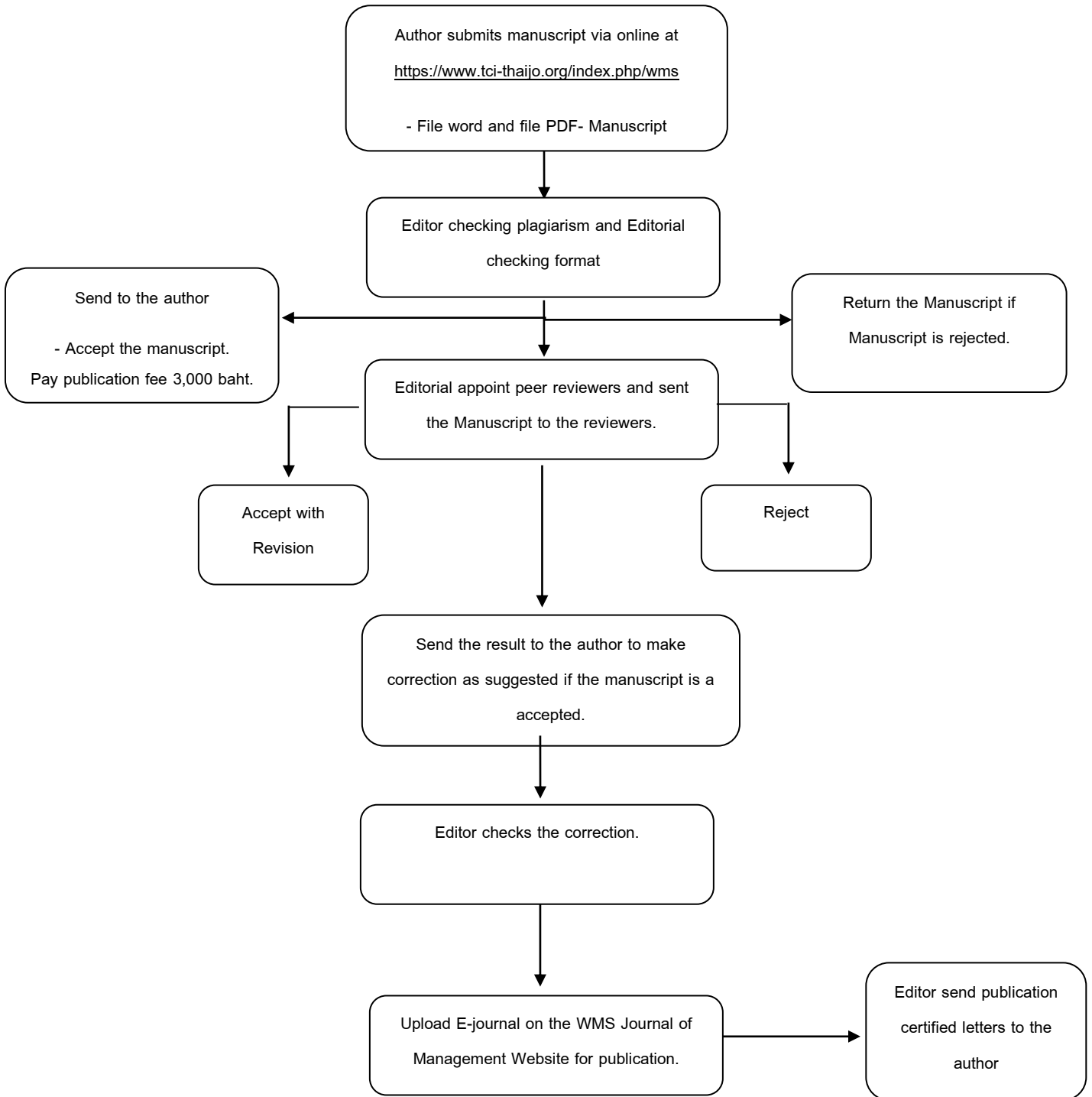
2. Open Access Policy

WMS Journal of Management considers Thai or English written academic articles, research articles and book reviews. The electronic format (on-line) has published the 1st volume (May-August) 2012. for 3 volumes. Since 2018, WMS Journal of Management has published 4 volumes consist of issue 1 (January-March), issue 2 (April - June), issue 3 (July - September) and issue 4 (October - December).

3. Peer Review Processes

1. Type of manuscripts contributions include research articles, academic articles and book review.
2. The editorial board screens the manuscript submitted for publication.
2. The submitted manuscript must be unpublished work and must not be currently under consideration for publication elsewhere.
3. The submitted manuscripts must be Thai or English only.
4. All submitted manuscripts must be reviewed by at least two expert reviewers via the double-blinded review system.

4. Process WMS Journal of Management Production



5. Manuscript preparation

The printing manuscript should be Microsoft Word for Windows or software as similarly.

The manuscript form should be as follow: 1 Column of Abstract and 2 Column of text must be printed with single space on one side of A 4 paper with margin of 3.0 cm for top and 2.5 cm for left sides, right side and bottom. Please use Browallia New Font. Please all number of pages at the right corner.

5.1 Title and Author

1. The title must be printed in Thai and in English in Browallia New 18 pts bold.
2. Name of all authors both in Thai and in English in Browallia New 14 pts bold.
3. Author's address : please specify a department,instution and Institution's address and post codes both in Thai and in English Browallia New 14 pts non-bold.

5.2 Contents Research article

1. The abstract in Thai and in English should not exceed 300 words and keywords should not exceed 5 words .
2. Introduction : Statement of Problem and Significance of Research.
3. Objective.
4. Literature Review and conceptual framework (If any.)
5. Material and methods (data, population, research instrument, sampling design and statistical analysis.)
6. Results and discussion (results corresponding to research objectives.)
7. Conclusion and Recommendation (highlight the significance or usefulness of your work.)
8. Acknowledgment (If any.)
9. References (APA (American Psychological Association) version 6 for Foreign Language.)

5.3 Contents Academic article

1. The abstract in Thai and in English should not exceed 300 words and keywords should not exceed 5 words .
2. Introduction : Statement of Problem.
3. Objective. (objective and scope)

4. Results and Analysis.
5. Conclusion and Recommendation
6. Acknowledgment (If any.)
7. References (APA (American Psychological Association) version 6 for Foreign Language.)

5.4 Printing

1. An entire length of the article, including references and others, should not exceed 20 pages.
2. The title must be printed in Thai and in English in Browallia New 18 pts bold.
3. Name of all authors both in Thai and in English in Browallia New 14 pts bold.
4. Do not specify any position .

5.5 Font and punctuation

1. Please Use Browallia New Font only.
2. The title must be printed in Thai or in English in Browallia New 14 pts bold and the sub title in Browallia New 14 pts italic .
3. The description use Browallia New 14 pts and each content align paragraph to both the left and right margins.
4. The title order of content put Arabic number such as 1 and if it has sub title use decimals such as 1.1 etc.
5. The printing is not space when a new title 1 space and printed full column. Don't have empty.
6. Line spacing in vertical should be content align paragraph to both the left and right margins.

5.6 Creation picture

1. All pictures and fonts have to be a big size which can read clearly and should not smaller than content fonts.
2. All pictures have number and description below picture. The number and description combine length exceed 2 lines.
3. Line pattern need to be black color. A part photo is black and white resolution.

5.7 equation writing

1. All equation must be numbers in brackets and order correctly.

The position of number equation should be align right column.

Example

$$c(n) = a \cdot |x(n)| + (1 - a) \cdot c(n-1) \quad (1)$$

1. Line spacing 1 line and space under equation 1 line.

5.8 schedule and graph

1. Font schedule not smaller than in content by use 14 point for content and draw a line schedule black color.
2. Every schedule should have number and description above schedule not over 2 lines in description above .
3. Line spacing above description 1 line and space under schedule 1 line.
4. Graph and schedule use report data related lots of numbers easily .

5.9 References

References must be English only. In case, references others should be translated to English.

1. In-text citation (Author-date in-text citation) example: (Wilson, 2016, p. 20)
2. Reference citation use APA (American Psychological Association) Edition 6 for Foreign Language. Romanized Author Author's in original language.

Journal Articles

Author. (Year). Romanized Title [translated Title]. *Journal*, Vol (Issue), page.

Hua, L.F. (1999). Qingdai yilai Sanxia diqu shuihan zaihai de chubu yanjiu [A preliminary study of floods and droughts in the Three Gorges region since the Qing dynasty]. *Zhongguo Shehui Kexue*, 1(1), 168-79.

Books

Author. (Year). *Romanized Title* [Translated Title]. Place: Publisher.

Anurak, C. (2011). *sētthakit phōphiāng kap kāndamnēn thurakit* [Sufficiency economy and business management] (2nd ed.). Bangkok, Thailand: Total Access Communication.

Thesis/Dissertation

Author. (Year). Romanized Title of dissertation [Translated Title of dissertation] (Master's/PhD thesis).

Place: Name of Institution.

Mekhasuwan, K. (2001). *Romanization* [The study of consumer acceptance for herbal drinking products in Bangkok]. (Master's Thesis, Dhurakij Pundit University, Thailand).

Websites

Romanized Author Author's in original language. *Romanized Title* [Translated Title]. Retrieved from <https://www.xxxxxxxxxx>

Davis, Beverly M. (2004). *The impact of leadership on employee motivation*. Retrieved from http://www.lib.umi.com/digitaldissertations/gateway/full_citation_&_abstract/AAT_MQ89924.

Conference papers/Proceedings

Author. (Year). Romanized Title of paper [Translated Title of paper]. In Editor (Ed.). *Romanized Title of conference* [Translated Title of conference] (Pages). Place: Publisher.

Du, W. (2007). Dunhuang yishu yongzhi gaikuang ji qianxi [An analysis and description of the use of paper in Duanhuang manuscripts]. In S. Lin & A. Morrison (Eds.). *Rongshe yu chuangxin: Guoji Dunhuang xiangmu diliuci huiyi lunwenji* [Tradition and Innovation: Proceedings of the 6th International Dunhuang Project Conservation Conference] (pp. 67-84). Beijing: Beijing Tushuguan Chubanshe.

Thai Romanization

For the Thai language, please follow Thai Romanization developed by NECTEC at <https://164.115.23.167/plangsarn/index.php>.

6. Manuscript subscription

Authors interested in submitting for publication in WMS Journal of Management (ISSN 2286-718X) can find further details as well as the basic operating guidelines for Thaijo at <https://www.tci-thaijo.org/index.php/wms> as the journal to subscribe for and then proceeding to the submission process via Thaijo.